

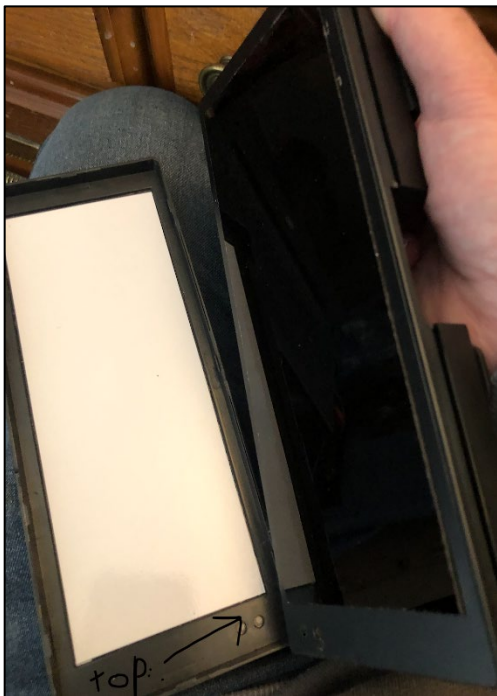
KDS – Bumpbar Setup

Bumpbar Setup – Replacing the Template

1. Place the template into the Bumpbar.
2. Remove front plate by opening it here.

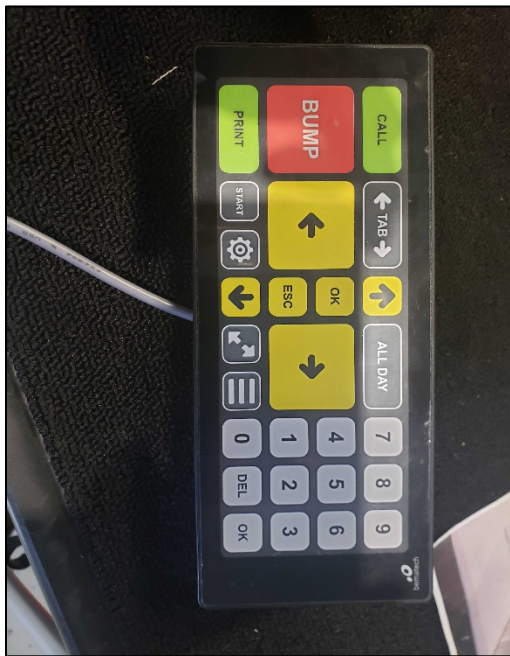


3. The top of the device is here at the arrow.



KDS – Bumpbar Setup

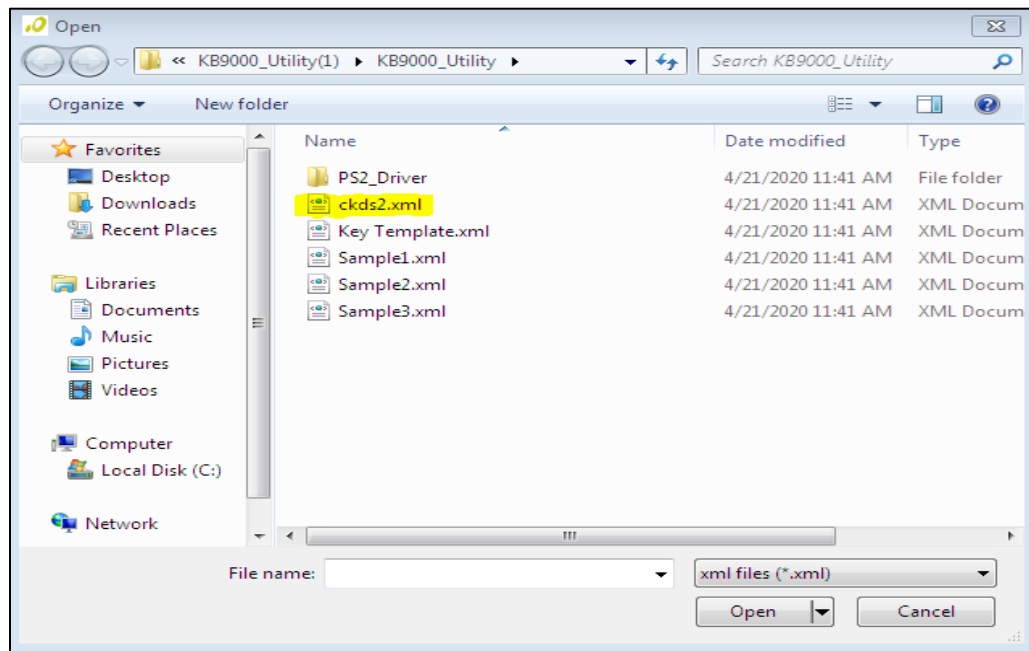
4. This is the view with the new template installed.



Bumpbar Setup – Complete the Image Process

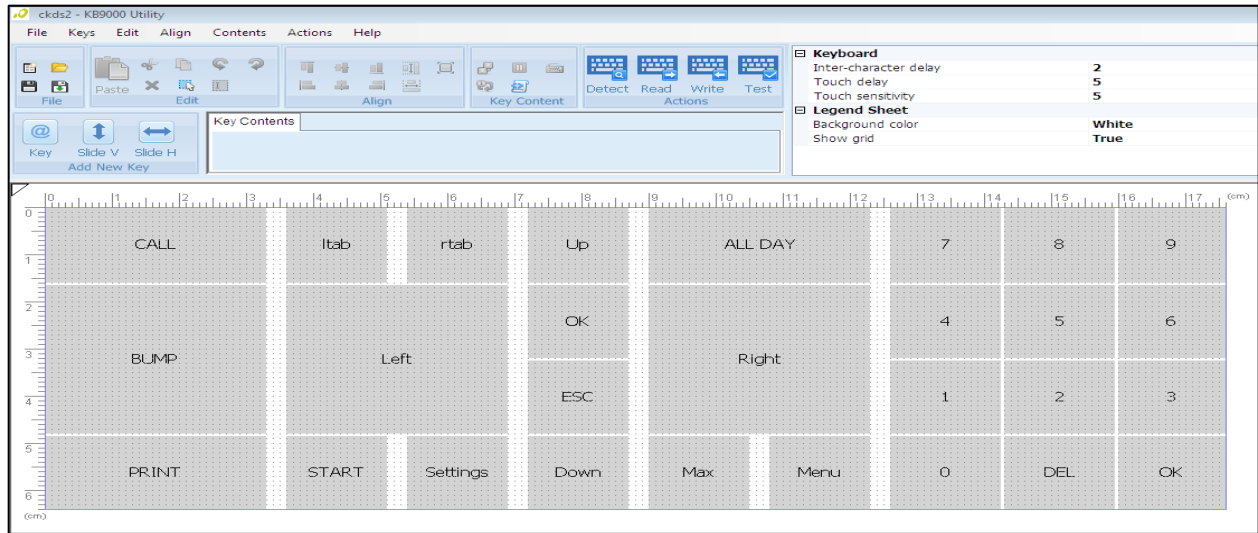
1. Using a Windows7 PC (assumes PC has the utilities installed):

- a. Plug the Bump Bar into a USB port.
- b. Run **kb9utility.exe**.
- c. File, Open in utility – select **ckds2.xml**.

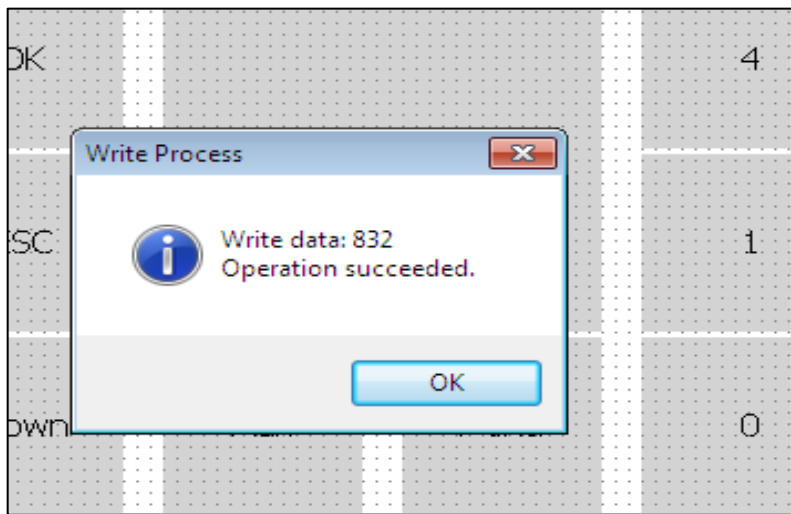


KDS – Bumpbar Setup

The layout will display. The actions on the top are – Read, Write, Test, and Detect.



2. Do a Detect to check for a connection.
3. Do a Write Data.



4. Do a Test to make sure the buttons are working.

Bumpbar Setup – Key Functions

Function	Key	Action
Call	KeyC	"Calls" a ticket.
Bump	KeyB	"Bumps" a ticket.
Print	KeyP	Sends ticket to the configured printer.
Tab Left	KeyL	Moves to the next Tab on the left.



KDS – Bumpbar Setup

Function	Key	Action
Tab Right	KeyR	Moves to the next Tab on the right.
Start	KeyS	"Starts" a ticket.
Settings	KeyT	Toggles the Settings page.
Left	ArrowLeft	Moves one ticket to the left.
Right	ArrowRight	Moves one ticket to the right.
Up	ArrowUp	(Imperfectly) Moves one ticket down.
Down	ArrowDown	(Imperfectly) Moves one ticket up.
Ok	Enter	
Esc	Escape	
Expand	KeyX	
Menu	KeyM	
AllDay	KeyA	Toggles the All Day menu.
0	Numpad0	
1	Numpad1	
2	Numpad2	
3	Numpad3	
4	Numpad4	
5	Numpad5	
6	Numpad6	
7	Numpad7	
8	Numpad8	
9	Numpad9	
DEL	NumpadDecimal	
NOK	NumpadEnter	