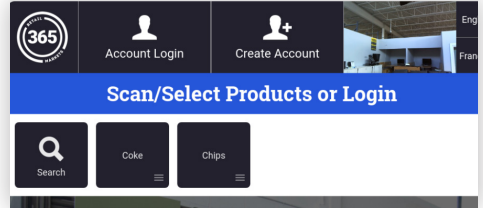


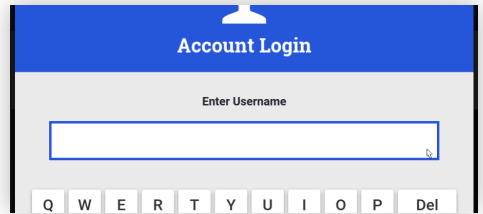
How to Retrieve Your GMA Account



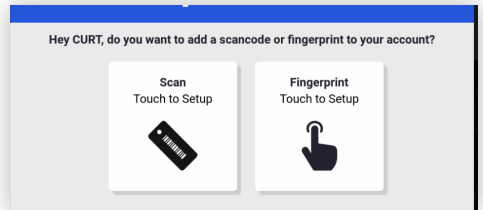
1 Click the **Account Login** button on the kiosk and select **Retrieve Account**;



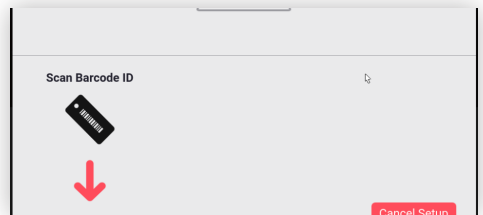
2 Enter your **Unique ID** followed by **your PIN**;



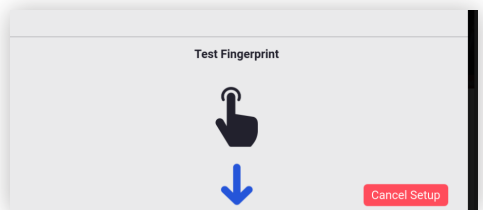
3 Choose which **Account Identifier** you would like to save. You can save a **barcoded card** or use your **fingerprint**;



4 If you choose to **Use A Card**, scan a barcoded card to save to your account;



5 If you choose to **Use Fingerprint**, follow the prompts.



For assistance please contact your market operator